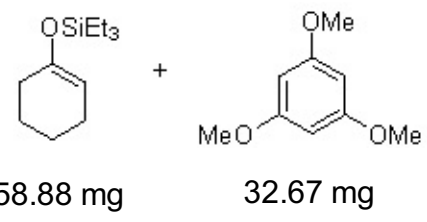


7.26 CDCl<sub>3</sub>

-6.09  
-4.88  
-4.88  
-4.88  
-4.87  
-4.87  
-4.87  
-4.87  
-4.86  
-3.77  
-2.03  
-2.03  
-2.03  
-2.02  
-2.02  
-2.02  
-2.01  
-2.01  
-2.01  
-2.01  
-2.00  
-2.00  
-2.00  
-2.00  
-1.99  
-1.99  
-1.99  
-1.86  
-1.86  
-1.85  
-1.85  
-1.84  
-1.84  
-1.68  
-1.68  
-1.68  
-1.67  
-1.66  
-1.66  
-1.65  
-1.65  
-1.64  
-1.64  
-1.63  
-1.53  
-1.53  
-1.52  
-1.52  
-1.51  
-1.50  
-1.50  
-1.49  
-1.49  
-1.01  
-1.01  
-1.00  
-0.99  
-0.98  
-0.97  
-0.96  
-0.94  
-0.92  
-0.68  
-0.67  
-0.67  
-0.66  
-0.65  
-0.64  
-0.64  
-0.64  
-0.55  
-0.54  
-0.52  
-0.01



<sup>1</sup>H-NMR, CDCl<sub>3</sub>

Determined purity: 92.4%

